

Name \_\_\_\_\_

Common Core Standard 7.RP.A.2.A – Ratios &amp; Proportional Relationships

- Which of the answers is equivalent to the ratio below? Be sure to show your work.

**6 boys for every 4 girls**

- A 8 boys for every 6 girls  
 B 12 boys for every 8 girls  
 C 4 boys for every 6 girls  
 D 3 boys for every 8 girls

Common Core Standard 7.RP.A.2.A – Ratios &amp; Proportional Relationships

- Which ratio forms a proportion with  $10/12$ ? Be sure to show your work.

- A  $5/6$   
 B  $6/5$   
 C  $12/10$   
 D  $12/14$

Common Core Standard 7.RP.A.2.A – Ratios &amp; Proportional Relationships

- Fill in the missing number so that the quantities in the table below are in a proportional relationship. Be sure to show your work.

Dogs	1	2	3	4
Legs	4	8		16

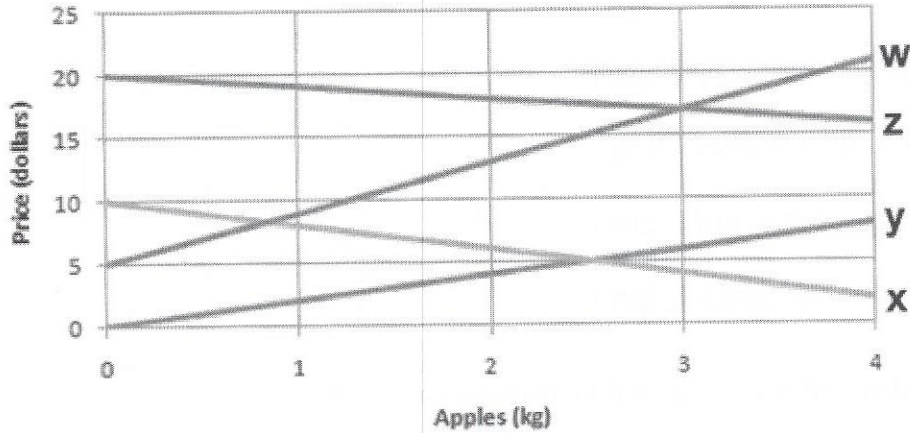
- A 10  
 B 12  
 C 14  
 D 15

Name \_\_\_\_\_

Common Core Standard 7.RP.A.2.A – Ratios & Proportional Relationships

Look at the graph below. Which line represents directly proportional relationship? Be sure to show your work.

Price of Apples



- A x
- B y
- C z
- D w

Common Core Standard 7.RP.A.2.A – Ratios & Proportional Relationships

Which ratio is equivalent to 2:6? Be sure to show your work.

- A 6:2
- B 3:1
- C 1:3
- D 1:5

Common Core Standard 7.RP.A.2.A – Ratios & Proportional Relationships

Look at the table below. Are the quantities in a proportional relationship? Be sure to show your work.

Wheels	6	8	10	12
Bikes	3	4	5	6

- A yes
- B no
- C partially yes
- D mostly no